



PRE QUALIFICATION DOCUMENT



tender@itccuae.com



www.itccuae.com

To Whomsoever It May Concern

Subject: Prequalification of Inter Technical Construction LLC (ITCC)

Dear Sir/Madam,

Inter Technical Construction LLC (ITCC) is an ISO Certified 9001, 14001, 45001 and 100% Abu Dabhi owned company by Mr.Sasi Kumar Karunakaran Nair, having its Head Offices in the Doha State of Qatar.

Inter Technical Construction LLC (ITCC) has joint ventures and exclusive representation agreements with leading international companies involved in a wide spectrum of activities including Engineering, and Industrial Equipment Manufacture & Supply.

Inter Technical Construction LLC (ITCC) is involved **General Contracting Construction Works (Civil, Mechanical, Piping and Electrical work)** related Earth work, Earth work, excavation, Foundation, Trenching, Infra structural, Asphaltting, and complete Building construction work, Mechanical Construction (Erection & Installation of Structural Steel Work, Piping, Equipment, Plumbing & HVAC) and all Type of Electrical work (MV and LV) on medium to large size Industrial Projects, Mechanical Repair & Maintenance Works, Blast Cleaning and Industrial Coating/Painting Works.

ITCC has a AL-Manal steel workshop-LLC company to deal with General and Specialized Fabrication Works, Steelwork, Piping, Storage Tank, Pressure vessel, Heat exchanger, column and Mechanical Equipment.

ITCC has a highly experienced Management Team, Technical Expertise, Trained & experienced Project Personnel, dedicated Skilled Manpower, Equipment resources and support (through its specialized overseas partners and Associate companies) to provide total Construction and Maintenance support for medium to large size Industrial and Non Industrial Construction Projects.

ITCC has its Own Construction Equipment and access to crusher, Concrete batching plant, large fleet of Mobile Cranes and Construction Equipment as well as additional resources with its strategic partners in State of Qatar other GCC States, which includes Heavy Lift/Heavy Haulage Equipment, all types of Mobile Cranes from 20T to 500T capacity and other **ITCC's** Project needs.

We wish to inform you that we are very keen to work with your company and would be pleased to provide clarifications (if required) or furnish any additional information that you may need.

We Assured you of our best attention at all times and look forward to the opportunity of working with you.

We look forward to hearing from you soon.

Thanks, and Best Regards,
For Inter Technical Construction LLC-SPC

Sasi Kumar Karunakaran Nair CEO

Tel: 02-6666013

Cell: 0521123739

E-mail: info@itccuae.com Web: www.itccuae.com

2. Company / Contact Details

2.0 Company / Contact Details

2.1 COMPANY DETAILS

Name: **Inter Technical Construction LLC-SPC. (ITCC)**

VAT registration Number: 100457864500003 License No.: CN-2907396

2.2 REGISTERED OFFICE

Registered Address:

**Mr Abdullah Muhair Abdullah Muhyan Build,
East 11, Abu Dhabi.**

Postal Address:

**ME 10, MBZ City, Abu Dhabi. Building No: AD CP/P 300 Mezzanine Floor
Office No: 01**

Contact: **Mr.Sasi Kumar Nair - MD**

Mr. Balaji Devaraj – Project Manager

Cont No : +971 50276988

Cont No : +971 547098066

Email : info@itccuae.com

Website : www.itccuae.com

2.3 WORKSHOP LOCATION

(Refer to the enclosed Location Plan of Offices and Fabrication Workshop)

3. Business Activities/ Scope of Services

3.0 Business Activities/Scope of Services

Inter Technical Construction LLC-SPC (ITCC) Scope of Services includes the following:

- **Engineering Services** – (Collaboration with Consultant Design Company)
- **Civil Work** such as Earth work, excavation, Foundation, Trenching, Plumbing, Sewerage network Infra structural, Asphaltting, and complete Building construction work.
- **Mechanical Installation** such as Steelwork, Prefabrication and Installation of Piping (Metallic/Non-Metallic) and Mechanical Equipment Erection & Installation Works of Industrial Projects.
- **Electrical Installation** Work such as cable Tray/Ladder, Cable Laying, Grounding, Cathodic Protection, Lighting Termination and Electrical Equipment/ Pannels installation.
- **General Fabrication and Specialized Fabrication Works** such as Steelwork, Piping, Storage Tank, Pressure vessel, Heat exchanger, Skids and Mechanical Equipment.
- **Blast Cleaning and Industrial & Non-industrial Coating/Painting Works.**
- **Provision of Skilled / Semi-skilled Manpower and Supervision.**

3.1 Engineering Services

Support Industrial Contracting Co. (SICC) has agreements and arrangements with Indian Engineering offices (Jacop Desing, VRP Design - India, Detailed Engineering Services to support the as ITCC site work projects as required.

Company Procedures are in place to ensure that Bills of Quantity and Material Take- off detail as well as Engineering deliverables are correct at all times of issue. ITCC Engineering and Project personnel are capable of undertaking projects from initial Detailed Engineering through to “As Built” documentation in compliance with the client’s Drawing and Data Requirements.

Continuous monitoring of discipline interfaces through company procedures and

systems ensures that the drawing production is in order during the projects time scale.

ITCC ensures that the Civil, Steel Work, Piping, Mechanical and Electrical detailing work is carried out by fully qualified and experienced professionals in compliance with the relevant National & International Standards and Project Specifications.

Engineering Services include:

- Feasibility study and Initial drafting
- Detailed Engineering / Shop Fabrication Drawings.
- Field Engineering / Installation Drawings.
- As-Built Drawings & SQ-Site Queries.

3.2 Civil Works

ITCC, a leading General Contracting company based in Abu Dhabi having Professional experience in constructing various types of Civil related work, Excavation, Trenching, Back filling, Earth work, reinforcement Concrete work, Structural/PEB Building Installation, Sewerage network, Asphaltting, buildings and infrastructure projects including MEP and HVAC in Abu Dhabi. We offer comprehensive solutions for all your civil engineering needs from feasibility studies to final handovers.

Our Scope: We will provide you with our services for Details Designing and constructing of Industrial, and Non industrials, Commercial Projects (Airport, Multi- story Buildings, Hotels, Schools, Shopping Centers, Mall etc. We will ensure that our Construction work meets all applicable codes, standards, and regulations for Industrial Compliance such as RC Municipality Building Regulations, etc. We will also ensure that our construction follows the best practices for safety, environmental protection, and sustainability such as ISO 9001, ISO 14001, ISO 45001, etc.

3.3 Mechanical, Piping and Equipment Site Erection and Pre-Commissioning

ITCC Mechanical core Project Management Team comprises of highly experienced project personnel in the management and execution of Erection & Installation Work of Steel Work, Piping and Mechanical Equipment for Power Stations, Steel Mills, Cement Plants, etc. Experience includes successful completion and handover of works on several Major projects for most of the prestigious clients and EPC contractors in the Steel Industries in the Abu Dhabi & Qatar

A brief scope of work includes but not limited to, following.

- Shop Drawing as required, supply, fabrication, installation, testing and commissioning of all, piping, steel structure and Mechanical equipment erection works for the project, in accordance with the contract specifications, drawings, codes and standards.
- Provision of all necessary materials, tools, machinery, labor, supervision, quality control, safety measures, permits, licenses and certificates for the mechanical, piping, steel structure and equipment erection works.
- Submission of all required documents, such as design calculations, shop drawings, material submittals, test reports, as-built drawings, operation and maintenance manuals, warranties and guarantees for the mechanical, piping, steel structure and equipment erection works.
- Operation and maintenance of the mechanical, piping, steel structure and equipment erection works during the defect liability period.
- Mechanical Erection works, such as pumps, compressors, fans, blowers, heat exchangers, boilers, vessels, tanks, etc.
- Piping Prefabrication and Erection/Installation works, such as pipes, fittings, valves, Steel structure works, such as beams, columns, trusses, frames, platforms, ladders, handrails, gratings, etc. flanges, gaskets, bolts, nuts, supports, hangers, insulation, c Equipment erection works, such as cranes, hoists, rigging, lifting, alignment, leveling, anchoring, grouting, etc.ladding, painting, etc.

3.4 Electrical Site installation work. Testing and Pre-Commissioning.

ITCC Electrical core Project Management Team comprises of highly experienced project personnel in the management and execution of Erection & Installation Work of electrical related work include, but is not limited to, the following.

- Supply, installation, testing and commissioning of all electrical systems and equipment for the project, in accordance with the contract specifications, drawings, codes and standards.
- Supply and installation of Ladders, Cable Trays, Laying of cable, Termination and testing.
- Provision of all necessary materials, tools, machinery, labor, supervision, quality control, safety measures, permits, licenses and certificates for the electrical works.
- Submission of all required documents, such as design calculations, shop drawings, material submittals, test reports, as-built drawings, operation and maintenance manuals, warranties and guarantees for the electrical works.
- Medium voltage (MV) and low voltage (LV) power distribution system, including switchgears, transformers, cables, bus ducts, panel boards, circuit breakers, switches, fuses, meters, surge protection devices, earthing and bonding systems, etc.
- Lighting systems, including indoor and outdoor lighting fixtures, lamps, ballasts, drivers, controls, sensors, dimmers, etc.

3.5 General Fabrication Works

ITCC has a Fabrication Facility With sister (Arabian Gulf Metal Factory- AGMF) Company located in Near Hofuf Steet Al Ahsa Industrial City- KSA

3.5.1 Structural Steel Work/Mechanical Work:

ITCC/AL-MANAL fabrication facilities are equipped to fabricate Steel work, Piping and Aluminum Work for a variety of requirements on Industrial Projects such as:

- Oil & Gas Projects.
- Petrochemical Plants.
- Aluminum Smelters.
- Power Plants.
- Cement Plants.
- Material Handling Equipment - Conveyors, Cranes, etc.

3.5.2 Storage Tanks & Silos:

ITCC/AL-MANAL has the capability to design, supply, fabricate, paint and erect Above Ground Storage Tanks, Silos and Elevated Tanks as per latest API 650, BS EN 14015 & AWWA D100 standards for major industries in Qatar, including the local Oil Abu Dhabi Electricity & Water Authority etc.

3.5.3 Piping Fabrication:

ITCC/AL MANAL is an approved Contractor for Pre-Fabrication, Surface Preparation and Painting work as well as Modification/Repair/Refurbishment and Erection/Installation of all types of Piping Work for Oil and Gas and Petrochemical Plant in KSA.

ITCC/AL MANAL is fully equipped to carry out various types of welding works, including **FCAW, MMAW, SMAW, MIG, TIG & SAW** with welders skilled to **ASME. IX 6GR**. All types of Fabrication Work can be undertaken in Carbon Steel, Stainless Steel and other exotic materials for small bore to large diameter piping.

3.6 Plant Maintenance & Services during Shutdowns/Turnarounds Repair & Maintenance of Tanks

ITCC is an approved Contractor to carry out Mechanical Repair and Maintenance of Storage Tanks, including Blast Cleaning and Industrial Coating / Painting for Oil and Gas and Petrochemical Industries and Scope of Services include the following:

- Tank Cleaning & De-sludging.
- Mechanical Repair of Tanks & Vessels.
- Cold Cutting Works.
- Hydro Blasting.
- Ultra-High Pressure / High Pressure Water Jetting.
- Blast Cleaning and Coating / Painting & Lining of Tanks and Vessels.
- Internal Coating & Lining of Vessels.
- Pipe Cleaning.
- Internal Pipe Coating.
- Super Sucking Services.
- Waste Management.

3.7 Surface Preparation / Painting Services

ITCC is fully equipped and has experienced team to carry out Surface Preparation and Painting / Coating Works at the project sites. Blast Cleaning work is carried out to SA 2/ 2.50/ 3.0 standards and Coating Systems applied from basic primers to 3 or 4 coat Paint Systems in Epoxy, Butyl alkyd and Rubber, GRP Coating & Lining utilizing both air and airless spray techniques.

Blasters and paint applicators are fully qualified and trained to carry out jobs in highly sensitive and challenging work environments at the Oil & Gas Facilities (as well as Water Storage Facilities (Ground Water Storage Tanks and Elevated Tanks) for the Oil and Gas/ Petrochemical and Electricity and Water Authority, meeting the Stringent Quality and Safety Standards.

3.8 Provision of Skilled / Semi-skilled Manpower and Supervision

ITCC is capable of mobilizing Manpower comprising of Skilled / Semi-skilled Workers, Supervision, Quality Control and Safety Personnel for major and minor Plant Shutdowns & Turnarounds as well as to cater to the needs of large EPC projects. Besides Saudi Work force, ITCC can provide fully qualified and experienced manpower from Europe, India, Pakistan, Philippines, Thailand, China, Nepal and Bangladesh at a short notice.

4. Quality & HSE Management Policy

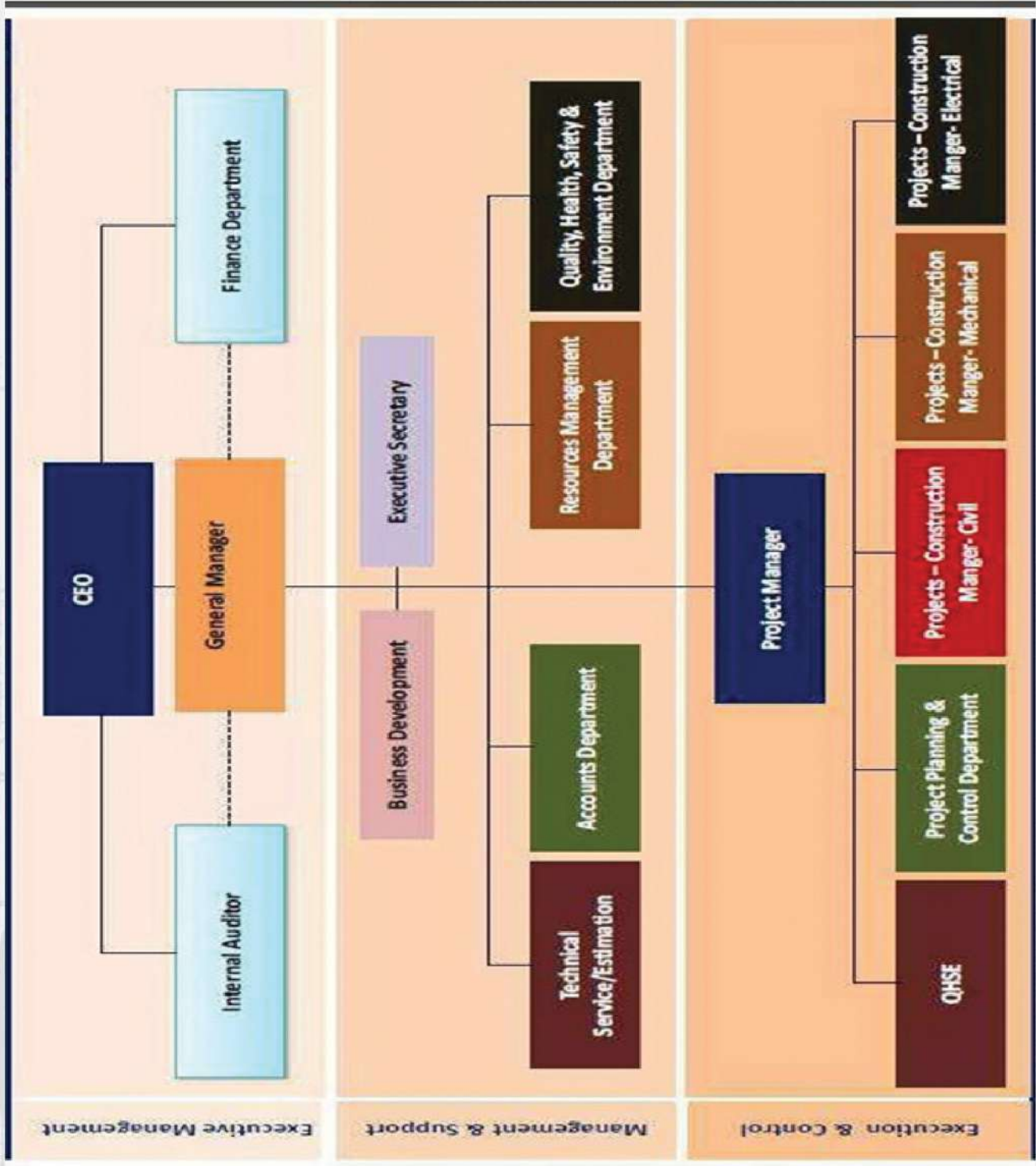
Inter Technical Construction LLC-SPC (ITCC) aims to offer high quality products and services to its customer for the provision of General Contracting Co. consists of Civil Works, Steel work, Piping, Tanks and Mechanical Erection and Installation Works of Industrial Projects, Plant Maintenance and Services during Shutdowns and Turnarounds, Blast Cleaning and Industrial Coating and Painting Works. The Management of ITCC is committed to:

- Document, Implement and Maintain the Integrated Management System as per ISO 9001, 14001 & 45001 requirements and continually improve its effectiveness and performance.
- To comply with applicable legal and other requirements with the scope of operations.
- Setting specific objectives & measuring system for continual improvement.
- To prevent injury and ill health by implementing controls and providing safe working environment to its employees, contractors, suppliers and visitors.
- To prevent pollution within the scope of organizations' activities and services.
- Regular reviews to measure and improve the Integrated Management System
- Understand and achieve customer requirements & their expectations.
- Review the policy periodically to ensure that it remains relevant and appropriate to the organization.

This policy shall be communicated to all employees, customers, suppliers and those who work for organization and shall be available to public.

Approved By:

5. Company Organization



6. Manpower Resources

MANPOWER RESOURCE		
S.No.:	Position/Designation	Total No's.
A. Executive Management		
01	CEO	1
02	General Manager	1
B. Management, Support & Project Staff		
	HR & Administration	1
	Finance & Accounts	1
	Purchasing Supervisor	1
	Q.H.S.E Engineer	1
	Estimation Engineer	1
	Quantity Surveyor	1
	Cost Control Engineer	1
	CADD Draftsman	1
	Material Controller/Storekeeper	1
	Site Coordinator	1
	QA/QC Supervisor	1
	Safety Officer	2
	Project Manager	1
	Project Engineer	2
	Planning Engineer	1
	Construction Supervisor	3
	Civil Engineer	1
	Surveyor	2
	IT Engineer	1
	Document Controller	1

7. Equipment Resources

EQUIPMENT LIST

S.No.	Name of Equipment	Manufacturer	Capacity	Quantity	Remarks
A	MOBILE CRANES (20 Ton to 200 Ton Capacity)				
1		Tadano Faun/ Liebherr	50 & 100 Ton	2	
2	Mobile Crane	Tadano Faun	50 Ton	1	From Associate
3	Loader	JCB		1	
4	Excavator	JCB		1	
5	Backhoo	JCB		1	
6	Heavy Craneage for Big Lifts		As Per Job Requirements		
	Roller Compactor				
	Asphalter				
B	FORKLIFT				
		Hyster	10 Ton	1	
		Komatsu	7 Ton	1	
		Nissan	5 Ton	1	
C	MAN LIFT	Genie	4 Ton	2	
D	TELEHANDLER	Bobcat	4 Ton	1	
E	TRACTER HEAD	Volvo, Mercedes	40 FT	2	
F	DIESEL TANKER	Isuzu/Ashok Leyland	3000 liters	1	
G	AIR COMPRESSOR	Atlas Copco	390 CFM	2	

EQUIPMENT LIST

S.No.	Name of Equipment	Manufacturer	Capacity	Quantity	Remarks
H	GENERATOR SET				
1		CAT	240 KVA	1	
2		VM Motori	105 KVA	1	
3		VM Motori	40 KVA	2	
I	WATER TANKER (Mobile)				
J	TIG WELDING M/C SETS.	Miller	400 Amps	8	
K	WELDING M/C ELECTRIC	Lincoln	200 Amps	15	
L	WELDING M/C (DIESEL)	Esab	600 Amps	5	
M	TOWER LIGHT	Yanmar	4.4kw	6	
N	PIPE CUTTING MACHINE				
1		MAKITA - 220V	16"	2	
2		BLACK & DECKER - 220 V	16"	3	
3		MAKITA2414 - 220 V	16"	2	
O	DRILL MACHINE				
1		BOSCH GBH 4 DSC	220V	2	
2		SPLT 342 TUPE -1	220V	1	
3		BOSCH GBH 10 DSC	220V	2	
4		HILTI TE 18 M	220V	2	
5		HILTI TE 24 M	220V	1	
6		HILTI TE 54 M	220V	1	

EQUIPMENT LIST

S.No.	Name of Equipment	Manufacturer	Capacity	Quantity	Remarks
Q	TORQUE WRENCHES				
1	Pneumatic	Hi-Force	150 N-Meter to 1500 N- Meter	10	
2	Mechanical	Various	65 N-Meter to 2200 N- Meter	8	
R	BUS (LARGE)	Daewoo	55 Seater	2	
S	MINI BUS				
1		Toyota	15 Seater	1	
2					
T	PICK UP TRUCKS				
1	Single Cabin	Toyota		1	
2	Double Cabin	Changon		4	
U	HIAB CRANE (Truck Mounted)		10 MT	1	
V	HAND TOOLS				
1	Nibler Machine	Metabo KU 6870	220 V	6	
2	Nibler Machine	Makita JS 1600	110 V	10	
3	Pencil Grinder		110 V / 220 V		
4	Grinder - 4½"		220 V		
5	Grinder - 4½"		110 V		
6	Grinder - 7"		220 V	Lot	
7	Grinder - 7"	Various	110 V		
8	Pneumatic grinder		All Range		
9	Fabricator / Fitter Toolbox		All Range		
10	Electrical Toolbox with all tools		All Range		
11	Fire Extinguisher - Various type		All Range	25	

EQUIPMENT LIST

S.No.	Name of Equipment	Manufacturer	Capacity	Quantity	Remarks
W	HAND TOOLS				
1	1/2" Wire Rope Sling		1 M to 5M		
2	5/8" Wire Rope Sling		1 M to 9M		
3	3/4" Wire Rope Sling		1 M to 15M		
4	7/8" Wire Rope Sling		1 M to 15M		
5	1" Wire Rope Sling		3 M to 15M		
6	1 1/2" Wire Rope Sling		3 M to 15M		
7	1 3/4" Wire Rope Sling		3.6 M		
8	2" Wire Rope Sling		3 M to 18M		
9	3" Web Sling		3M		
10	4" Web Sling		4M		
11	6" Web Sling		6M		
12	8" Web Sling		8M		
13	10" Web Sling		10M		
14	1 Ton Chain Block		1 Ton		
15	2 Ton Chain Block	Various	2 Ton	Lot	
16	3 Ton Chain Block		3 Ton		
17	5 Ton Chain Block		5 Ton		
18	10 Ton Chain Block		10 Ton		
19	1.5 Ton "D" Shackles		1.5 Ton		
20	2 Ton "D" Shackles		2 Ton		
21	2.5 Ton "D" Shackles		2.5 Ton		
22	3.5 Ton "D" Shackles		3.5 Ton		
23	4.5 Ton "D" Shackles		4.5 Ton		
24	6.5 Ton "D" Shackles		6.5 Ton		
25	8.5 Ton "D" Shackles		8.5 Ton		
26	9.5 Ton "D" Shackles		9.5 Ton		
27	12 Ton "D" Shackles		12 Ton		
28	13.5 Ton "D" Shackles		13.5 Ton		
29	17 Ton "D" Shackles		17 Ton		

EQUIPMENT LIST

S.No.	Name of Equipment	Manufacturer	Capacity	Quantity	Remarks
31	30 Ton "D" Shackles		30 Ton		
32	All Lifting Tools for Material Handling / Erection Work	Various		Lot	
X	BLASTING / PAINTING EQUIPMENT				
1	Mini Blasting Pot	Various	25 KG	2	
2	Blast Pot	Clemco	200 KG	6	
3	Air Receiver			4	
4	Water Receiver			4	
5	Wilden Pump	Various		4	
6	Breathing Apparatus/Pot			6	
7	Dampy unit			2	
8	Airless Spray Pump	Graco		10	
9	Paint Mixer Machine	Various		6	
10	After Cooler	Clemco		5	
11	Garnet / Abrasive Hopper		8 MT	5	
12	Pneumatic Vacuum Cleaner			2	
13	Garnet / Abrasive recovery Unit		4 MT	2	
14	Pneumatic Exhaust Fan	Various		2	
21	Cold Cutting Machine with all accessories	Various		6	

EQUIPMENT LIST

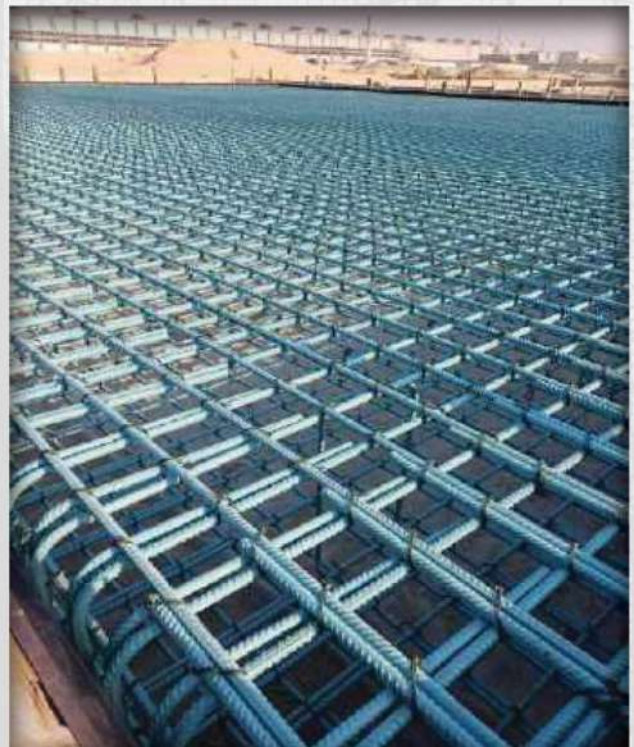
S.No.	Name of Equipment	Manufacturer	Capacity	Quantity	Remarks
Y	PORTA CABIN /				
1	Office Unit		10' x 40'	2	
2	Storage Container		40 Feet	2	
3	Storage Container		20 Feet	1	

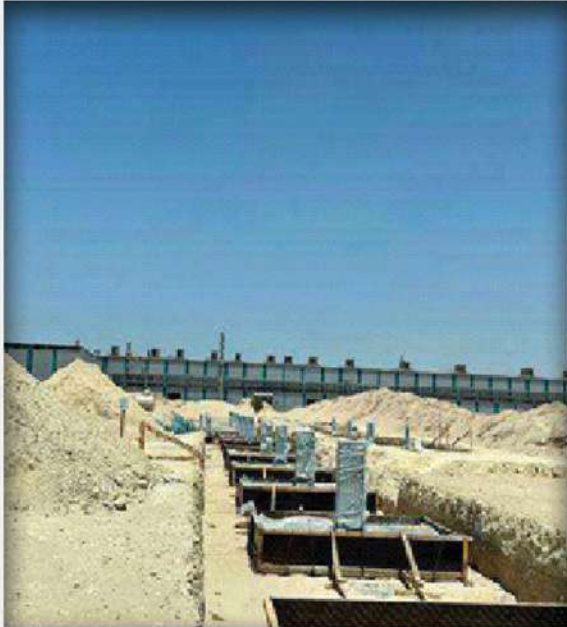
8. Project Experience

CIVIL WORK- EARTH WORK, EXCAVATION, RE-BAR, CONCRETE WORK AND REINFORCEMNET FOUNDATION

Preparation of shop drawing Earth work (Grading, subgrade prep Arion, Backfilling, compaction, excavation Supply and, Fabrication of rebar, form work and reinforcement concrete work installation/construction for:

- Steel Plant.
- Power Station.
- Aluminum Smelters.
- Power and Desalination Plants.
- Cement Plants.
- Commercial Project.
- Other Industrial Projects.









ERECTION OF STRUCTURAL STEEL, PROCESS BUILDING STRUCTURE, PIPE RACK AND PEB BUILDING

Preparation of Safety plan and quality plan, Lifting Plan related to installation of Steel structure i.e., Structural Building, Pipe rack, Platform, support and PEB installation/Erection for:

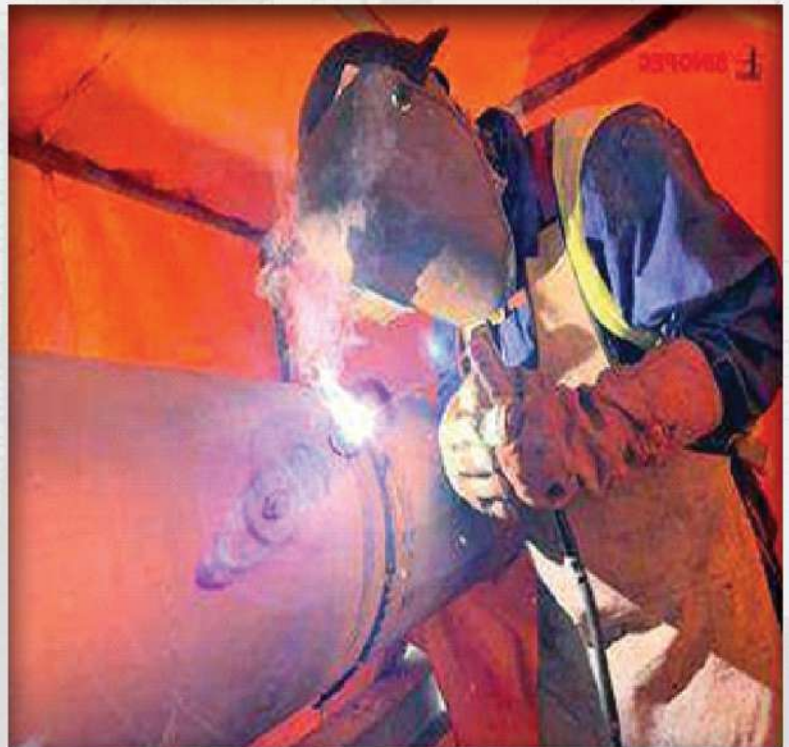
- Steel Plant.
- Power Station.
- Aluminum Smelters.
- Power and Desalination Plants.
- Cement Plants.
- Commercial Project.
- Other Industrial Projects.



PIPING PREFABRICATION AND INSTALLATION WORK

Preparation spool drawing, prefabrication and erection of piping spools consist of CS, SS and alloy ste with different pipe schedule along with hydrotest test. installation/Erection for:

- Steel Plant.
- Power Station.
- Aluminum Smelters.
- Power and Desalination Plants.
- Cement Plants.
- Commercial Project.
- Other Industrial Projects.





ELECTRICAL INSTALLATION WORK

Electrical installation work includes Switch gear and distribution Panel's installation, Termination, Cable Ladder/Cable tray installation, Control Panels installation and megger test.

Electrical Installation/Erection for:

- Steel Plant.
- Power Station.
- Aluminum Smelters.
- Power and Desalination Plants.
- Cement Plants.
- Commercial Project.
- Other Industrial Projects.



9. Major Project Reference

No	Clients	Description Of work	Remarks
1	AGSI	Construction of Water Complex	Up-Coming
2	AGSI	Construction of Proposed HRM CB Pulpit	Up-Coming
3			
4			
5			
6			
7			
8			
9			
10			
11			
12			
13			
14			
15			
16			
17			
18			
19			
20			
21			
22			
23			
24			

10. Commercial Registration Certificate

شهادة السجل التجاري
Commercial Registration Certificate

Details

التفاصيل

Licence Type	Business	تجارية	نوع الرخصة
Licence Category	Normal	عادية	فئة الرخصة
Registry No.	5944762		رقم السجل
Economic Licence No.	CN-2907396		رقم الرخصة الاقتصادية
Unified Registration No.	101-2021-100029058		رقم التسجيل الموحد
Customs Registration No.			رقم التسجيل الجمركي
ADCCI No.	2612390		رقم عضوية الغرفة
MOHRE Establishment Card No.	1067638	بطاقة المنشأة - وزارة الموارد البشرية والتوطين	
ICP Establishment Card No.	718406	بطاقة المنشأة - الهيئة الاتحادية للهوية والجنسية	
Establishment Date	31/10/2019		تاريخ التأسيس
Issuance Date	11/06/2025		تاريخ الإصدار
Expiry Date	12/06/2026		تاريخ الإنتهاء
Legal Form	Limited Liability Company - Sole Proprietorship Company	شركة ذات مسؤولية محدودة - شركة الشخص الواحد	الشكل القانوني
Trade Name	INTER TECHNICAL CONSTRUCTION - L.L.C - S.P.C	انتر تكنيكال للإنشاءات - ذ.م.م - ش.ش.و	الإسم التجاري

Ownership and Representatives

الملكية والممثلين

ممثل عن Representative of	النسبة Share	الدور/المنصب Role/Position	الجنسية Nationality	الاسم Name
	100.	مالك Owner	الهند India	ساسيكومار كاروناكاران ناير SASIKUMAR KARUNAKARAN NAIR
	0.	مدير Manager	الهند India	ساسيكومار كاروناكاران ناير SASIKUMAR KARUNAKARAN NAIR KARUNAKARAN NAIR

Paid Up Capital

رأس المال المدفوع

Amount	المبلغ
Amount in words	تفقيط القيمة

Licence Activities

الأنشطة المرخصة




 شهادة السجل التجاري
 Commercial Registration Certificate

Activity Name	رمز النشاط Activity Code	اسم النشاط
Buildings Cleaning Services * All Kind Building Projects Contracting	8121001 4100002	خدمات التنظيف الداخلية للمباني * مقاولات مشاريع المباني بأنواعها
Buildings Maintenance Cleaning the outside (interface) Buildings	4329901 8129001	صيانة المباني خدمات التنظيف الخارجي (واجهات) المباني
Pasco and Kerbstone Works	4330008	أعمال بلاط الأرصفة المتشابكة (الباسكو والكربستون)

The Contractor is not permitted to practice the activities marked with sign (*) unless these activities are classified and a Classification certificate is obtained for the department of Department of Urban Planning and Municipalities

لا يحق للمقاول ممارسة الأنشطة المشار إليها بعلامة (*) إلا بعد الحصول على شهادة التصنيف المعتمدة من دائرة التخطيط العمراني والبلديات.

Address

العنوان

Official Email

itccauh@gmail.com

البريد الإلكتروني الرسمي

Official Mobile

+971547098064

رقم التواصل الرسمي

Address

مدينة محمد بن زايد، محمد بن زايد شرق 10، 0 : م، مبنى، سالم محمد سالم شوط

العنوان

Licence Transactions

عمليات الرخصة

تاريخ الإصدار	تاريخ الطلب Submit Date	حالة الطلب Status	وصف العملية Description	نوع العملية Transaction Type	رقم العملية No.
	09/06/2021	اصدرت الرخصة Issued			RB-0021673
	15/06/2021	اصدرت الرخصة Issued			RB-0047934
09/01/2023	13/09/2022	اصدرت الرخصة Issued	تعديل اسم تجاري، تعديل الشكل القانوني، تعديل نسبة الشركاء / محمد صديق محمد احمد المرزوقي من شريك إلى مالك تعديل نسب الشركاء / محمد صديق محمد احمد المرزوقي من 51% إلى 100% تعديل الشركاء بتنازل وبيع / حذف بورنا بهانور اولي تعديل الشركاء بتنازل وبيع / حذف ميترا راج باوديل تعديل شكل قانوني / من شركة ذات مسؤولية محدودة إلى شركة الشخص الواحد ذ م م تعديل اسم تجاري من / ALL IN ONE GENERAL MAINTENANCE AND CLEANING L.L.C ول للصيانة العامة والتنظيف ذ.م.م إلى إلى GENERAL MAINTENANCE AND CLEANING SOLE PROPRIETORSHIP L.L.C - للسيانة العامة والتنظيف - شركة الشخص الواحد ذ م م	Capital Amendment, Legal Form Amendment, License	CA-4609983
30/08/2024	24/06/2024	اصدرت الرخصة Issued	تعديل مدير / تعديل الشركاء بتنازل وبيع / إضافة ساسيكومار كارونكاران ناير (100%) تعديل مدير / إضافة ساسيكومار كارونكاران ناير تعديل الشركاء بتنازل وبيع / حذف محمد صديق محمد احمد المرزوقي تعديل اسم تجاري من / ALL IN ONE GENERAL MAINTENANCE AND CLEANING - SOLE PROPRIETORSHIP L.L.C للسيانة العامة والتنظيف - شركة الشخص الواحد ذ م م إلى إلى SYSCON GENERAL CONTRACTING - L.L.C - S.P.C	Manager Amendment, Partners Amendment, Trade N	CA-5393290



شهادة السجل التجاري
Commercial Registration Certificate

رقم العملية No.	نوع العملية Transaction Type	وصف العملية Description	حالة الطلب Status	تاريخ الطلب Submit Date	تاريخ الإصدار
CA-5493174	تعديل الاسم التجاري Trade Name Amendment	سيسكون للمقاولات العامة - ذ.م.م - ش.ش.و	اصدرت الرخصة Issued	30/08/2024	10/10/2024
CA-5561646	تعديل الأنشطة Activity Replacement	تعديل نشاط / إضافة مقاولات مشاريع المباني بانواعها (4100002)	اصدرت الرخصة Issued	10/10/2024	11/10/2024
CA-5709175	تعديل العنوان Location Amendment	تعديل عنوان / من أبوظبي جزيرة أبوظبي شرق 11 344743 السيد عبدالله مهير عبدالله محبان إلى أبوظبي الحصن غرب 1_7 20250000417260 20250000417260 الأول ش.م.ع.	اصدرت الرخصة Issued	13/01/2025	15/01/2025
CA-5933845	تعديل العنوان Location Amendment	تعديل عنوان / من أبوظبي الحصن غرب 1_7 20250000417260 بنك أبوظبي الأول ش.م.ع. إلى أبوظبي الحصن غرب 1_7 20250000417260 بنك أبوظبي الأول ش.م.ع.	اصدرت الرخصة Issued	02/06/2025	03/06/2025
CA-5944464	تعديل العنوان Location Amendment	تعديل عنوان / من أبوظبي الحصن غرب 1_7 20250000417260 بنك أبوظبي الأول ش.م.ع. إلى أبوظبي مدينة محمد بن زايد محمد بن زايد شرق 10 202500071441 سالم محمد سالم شواطئ 202500071441	اصدرت الرخصة Issued	11/06/2025	11/06/2025



11. ISO-CERTIFICATE

CERTIFICATE of Registration



This is to certify that the Environment Management System of

INTER TECHNICAL CONSTRUCTION – L.L.C – S.P.C

Office No. M-01, Building No. C-34, Al Jasah Street, Shabia 10, MBZ,
Abu Dhabi, United Arab Emirates

has been assessed and registered by ACS W3 Solutionz as conforming
to the requirements of:

ISO 14001:2015

IN RESPECT TO ALL KIND BUILDING PROJECTS CONTRACTING,
BUILDINGS CLEANING SERVICES, MAINTENANCE, CLEANING THE
OUTSIDE (INTERFACE) BUILDINGS, PASCO AND KERBSTONE WORKS.

Certificate No.:

24.67.USAE101102.00

Original Approval:

28th September 2024

Certificate Issuance:

11th October 2024

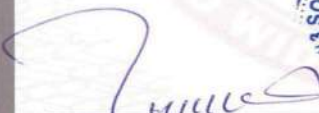
Certificate Expiry:

10th October 2025

Re-Certification:

27th September 2027




Director of Certification
ACS W3 Solutionz

In issuance of the certificate, ACS W3 Solutionz assume no liability to any other party other than to the client. This certificate becomes invalid if conditions of certification are not fulfilled (<http://w3solutionz.com/doc/F-OPE-306CoP.pdf>). This certificate is the property of W3 Solutionz FZE dba ACS W3 Solutionz.

LIST OF THE COUNTRIES WHERE W3 SOLUTIONZ CAN ISSUE USAS ACCREDITED CERTIFICATES:

Afghanistan, , Algeria, Argentina, Armenia, Australia, Austria, Azerbaijan, Bahrain, Bahamas, Bangladesh, Belgium, Bhutan, Bosnia and Herzegovina, Brazil, Brunei Darussalam, Bulgaria, Cambodia, Canada, Chad, Chile, China, Colombia, Croatia, Cyprus, Czech Republic, Denmark, Dominica, Ecuador, Egypt, Estonia, Ethiopia, Fiji, Finland, France, Georgia, Germany, Greece, Haiti, Hong Kong, Hungary, India, Indonesia, Iran, Iraq, Ireland, Italy, Japan, Jordan, Kazakhstan, Kenya, Korea, Kuwait, Kyrgyzstan, Latvia, Lebanon, Libya, Lithuania, Luxembourg, Malaysia, Malta, Mauritania, Mauritius, Mexico, Morocco, Myanmar, Nepal, Netherlands, New Zealand, Nigeria, Norway, Oman, Pakistan, Palau, Palestine, Panama, Paraguay, Peru, Philippines, Poland, Portugal, Puerto Rico, Qatar, Romania, Russian Federation, Saudi Arabia, Serbia, Singapore, Slovakia, Slovenia, Somalia, South Africa, South Sudan, Spain, Sri Lanka, Sudan, Swaziland, Sweden, Switzerland, Syrian Arab Republic, Taiwan, Province of China, Tajikistan, Tanzania, Thailand, Tunisia, Turkey, Turkmenistan, Uganda, Ukraine, United Arab Emirates, United Kingdom, United States, Uruguay, Uzbekistan, Venezuela, Viet Nam, Virgin Islands, British, Virgin Islands, U.S., Yemen, Zambia, Zimbabwe.

300 Hilltop Road Oakville Ct, 33145, United States of America Ph: +1 (860) 896 8737, Web: www.w3solutionz.com

CERTIFICATE of Registration



This is to certify that the Occupational Health & Safety management systems of

INTER TECHNICAL CONSTRUCTION – L.L.C – S.P.C

Office No. M-01, Building No. C-34, Al Jasah Street, Shabia 10, MBZ,
Abu Dhabi, United Arab Emirates

has been assessed and registered by ACS W3 Solutionz as conforming to the requirements of:

ISO 45001:2018

IN RESPECT TO ALL KIND BUILDING PROJECTS CONTRACTING,
BUILDINGS CLEANING SERVICES, MAINTENANCE, CLEANING THE
OUTSIDE (INTERFACE) BUILDINGS, PASCO AND KERBSTONE WORKS.

Certificate No.:
24.67.USAE101103.00
Original Approval:
28th September 2024
Certificate Issuance:
11th October 2024
Certificate Expiry:
10th October 2025
Re-Certification:
27th September 2027




Director of Certification
ACS W3 Solutionz

In issuance of the certificate, ACS W3 Solutionz assume no liability to any other party other than to the client. This certificate becomes invalid if conditions of certification are not fulfilled (<http://w3solutionz.com/doc/E-OPE-306CoP.pdf>). This certificate is the property of W3 Solutionz FZE dba ACS W3 Solutionz.

LIST OF THE COUNTRIES WHERE W3 SOLUTIONZ CAN ISSUE USAS ACCREDITED CERTIFICATES:

Afghanistan, , Algeria, Argentina, Armenia, Australia, Austria, Azerbaijan, Bahrain, Bahamas, Bangladesh, Belgium, Bhutan, Bosnia and Herzegovina, Brazil, Brunei Darussalam, Bulgaria, Cambodia, Canada, Chad, Chile, China, Colombia, Croatia, Cyprus, Czech Republic, Denmark, Dominica, Ecuador, Egypt, Estonia, Ethiopia, Fiji, Finland, France, Georgia, Germany, Greece, Haiti, Hong Kong, Hungary, India, Indonesia, Iran, Iraq, Ireland, Italy, Japan, Jordan, Kazakhstan, Kenya, Korea, Kuwait, Kyrgyzstan, Latvia, Lebanon, Libya, Lithuania, Luxembourg, Malaysia, Malta, Mauritania, Mauritius, Mexico, Morocco, Myanmar, Nepal, Netherlands, New Zealand, Nigeria, Norway, Oman, Pakistan, Palau, Palestine, Panama, Paraguay, Peru, Philippines, Poland, Portugal, Puerto Rico, Qatar, Romania, Russian Federation, Saudi Arabia, Serbia, Singapore, Slovakia, Slovenia, Somalia, South Africa, South Sudan, Spain, Sri Lanka, Sudan, Swaziland, Sweden, Switzerland, Syrian Arab Republic, Taiwan, Province of China, Tajikistan, Tanzania, Thailand, Tunisia, Turkey, Turkmenistan, Uganda, Ukraine, United Arab Emirates, United Kingdom, United States, Uruguay, Uzbekistan, Venezuela, Viet Nam, Virgin Islands, British, Virgin Islands, U.S., Yemen, Zambia, Zimbabwe.

300 Hilltop Road Oakville Ct, 33145, United States of America Ph: +1 (860) 896 8737, Web: www.w3solutionz.com

CERTIFICATE of Registration



This is to certify that the Quality Management System of

INTER TECHNICAL CONSTRUCTION – L.L.C – S.P.C

Office No. M-01, Building No. C-34, Al Jasah Street, Shabia 10, MBZ,
Abu Dhabi, United Arab Emirates

has been assessed and registered by ACS W3 Solutionz as conforming
to the requirements of:

ISO 9001:2015

IN RESPECT TO ALL KIND BUILDING PROJECTS CONTRACTING,
BUILDINGS CLEANING SERVICES, MAINTENANCE, CLEANING THE
OUTSIDE (INTERFACE) BUILDINGS, PASCO AND KERBSTONE WORKS.

Certificate No.:
24.67.USAE101101.00
Original Approval:
28th September 2024
Certificate Issuance:
11th October 2024
Certificate Expiry:
10th October 2025
Re-Certification:
27th September 2027



[Signature]
Director of Certification
ACS W3 Solutionz

Exclusions: 8.3

In issuance of the certificate, ACS W3 Solutionz assume no liability to any other party other than to the client. This certificate becomes invalid if conditions of certification are not fulfilled (<http://w3solutionz.com/doc/P-OPE-306CoP.pdf>). This certificate is the property of W3 Solutionz FZE dba ACS W3 Solutionz.

LIST OF THE COUNTRIES WHERE W3 SOLUTIONZ CAN ISSUE USAS ACCREDITED CERTIFICATES:

Afghanistan, , Algeria, Argentina, Armenia, Australia, Austria, Azerbaijan, Bahrain, Bahamas, Bangladesh, Belgium, Bhutan, Bosnia and Herzegovina, Brazil, Brunei Darussalam, Bulgaria, Cambodia, Canada, Chad, Chile, China, Colombia, Croatia, Cyprus, Czech Republic, Denmark, Dominica, Ecuador, Egypt, Estonia, Ethiopia, Fiji, Finland, France, Georgia, Germany, Greece, Haiti, Hong Kong, Hungary, India, Indonesia, Iran, Iraq, Ireland, Italy, Japan, Jordan, Kazakhstan, Kenya, Korea, Kuwait, Kyrgyzstan, Latvia, Lebanon, Libya, Lithuania, Luxembourg, Malaysia, Malta, Mauritania, Mauritius, Mexico, Morocco, Myanmar, Nepal, Netherlands, New Zealand, Nigeria, Norway, Oman, Pakistan, Palau, Palestine, Panama, Paraguay, Peru, Philippines, Poland, Portugal, Puerto Rico, Qatar, Romania, Russian Federation, Saudi Arabia, Serbia, Singapore, Slovakia, Slovenia, Somalia, South Africa, South Sudan, Spain, Sri Lanka, Sudan, Swaziland, Sweden, Switzerland, Syrian Arab Republic, Taiwan, Province of China, Tajikistan, Tanzania, Thailand, Tunisia, Turkey, Turkmenistan, Uganda, Ukraine, United Arab Emirates, United Kingdom, United States, Uruguay, Uzbekistan, Venezuela, Viet Nam, Virgin Islands, British, Virgin Islands, U.S., Yemen, Zambia, Zimbabwe.

300 Hilltop Road Qaboofa Ct. 37145, United States of America, TX #1 (860)896-8737, www.w3solutionz.com



البناء الفني الدولي - ذ.م.م - ش.ش.و
INTER TECHNICAL CONSTRUCTION - LLC-S.P.C

**INTER TECHNICAL CONSTRUCTION COMPANY LLC-SPC
HEALTH, SAFETY AND ENVIRONMENT(HSE)PLAN
05.09.2024**

Maintaining excellence in the safety of the work being done is a primary requirement not only for well-being of the personnel engaged in construction work but also for the benefits that accrue through higher moral and the expedition of the construction time of a project. It is for this reason; a safety program is formulated. INTER TECHNICAL CONSTRUCTION Company is fully committed in ensuring health and safety of all personnel, in the preservation of environment and security requirement, permit to work systems, and safety regulations for contractors. We have a Safety Management System in place with 'Zero Accident Philosophy which engages all employees and improve HSE Performance in our projects. In addition, providing all employees with the adequate training to supplement their skill set and ensure that they are capable of completing all their task efficiently and safety. We actively train all levels of managers and employees and frequently recommend new training programs for them to supplement their skill.

ITCC is committed to providing a safe and healthy workplace and conducting its business activities in manner that protects the environment. To achieve these goals, all company location shall adhere to the following

- Identification and evaluation of all HSE hazards or aspects and the management of those risk reduce their impacts to acceptable levels
- Compliance with all applicable HSE legislation
- Prevention of incidents, injuries, and pollution
- Intolerance of the conditions and behaviours that contribute to incidents and injuries
- Reduction of waste and conservation of resources
- Recording and communicating HSE performance throughout the organization
- Continual improvement of HSE performance

The CEO and senior management shall visibly uphold these principles throughout the Company and integrate them into the Company's HSE Policy and Management System. The Board of Directors of the company shall regularly review HSE performance.

ME 10, MBZ City, Abu Dhabi. Building No : AD CP/P 300
Mazzanine Floor Office No : 01
026666013
info@itccuae.com
www.itccuae.com



AD CP/P 300
شعبه 10، محمد بن زايد، أبوظبي. رقم المبنى
طابق الميزانين مكتب رقم: 01

٠٢٦٦٦٦٠١٣
info@itccuae.com
www.itccuae.com



البناء الفني الدولي - ذ.م.م - ش.ش.و
INTER TECHNICAL CONSTRUCTION - L.L.C-S.P.C

Management and supervisory personnel at each division and location shall be responsible for implementing and maintaining the Company's HSE Policy and Management System. Contractors and subcontractors shall work in accordance with the Company's HSE Policy and comply with applicable HSE legislation. Regular HSE audits shall be done to determine conformance to the HSE Management System.

Every employee, whose work may create a significant HSE impact/ shall be trained and held accountable for complying with the Company's HSE Policy and related procedures, practices, instructions and rules. Working safely and in an environmentally appropriate manner are conditions of employment. Each employee has a duty to report workplace conditions or practices that pose a safety hazard or threaten the environment and to take responsible actions to alleviate such risks.

Everyone is responsible for recognizing that by risking incident or injury, they are putting in jeopardy what they value and those they care for.

The INTER TECHNICAL CONSTRUCTION LLC-SPC proactive Health, Safety and Environment culture communicated, shared and practiced by all impart of everyday business. Fundamental to this cultural is our belief that all the company business revolves around the health and wellbeing our people.

Regards,

SASIKUMAR KARUNAKARAN NAIR
MANAGING DIRECTOR

ME 10, MBZ City, Abu Dhabi, Building No : AD CP/P 300
Mezzanine Floor Office No : 01

026666013
info@itccuae.com
www.itccuae.com



AD CP/P 300 شعبة 10، محمد بن زايد، أبوظبي، رقم المبنى
طابق المبراس مكتب رقم: 01

٠٢٦٦٦٠١٣
info@itccuae.com
www.itccuae.com

CONTACT US :

 026666013

 info@itccuae.com

 www.itccuae.com

 M-01, Building No. C-34. Al Jasah Street
Shabia 10, Mbz City - Abudhabi UAE



Scan Me For
LOCATION

